

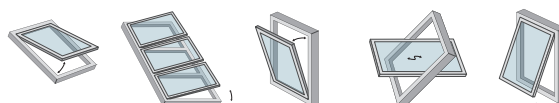
Electric chain actuator for opening and closing outward windows, sheds, skylights and inward windows in wood, PVC and aluminium.



AVAILABLE COLOURS

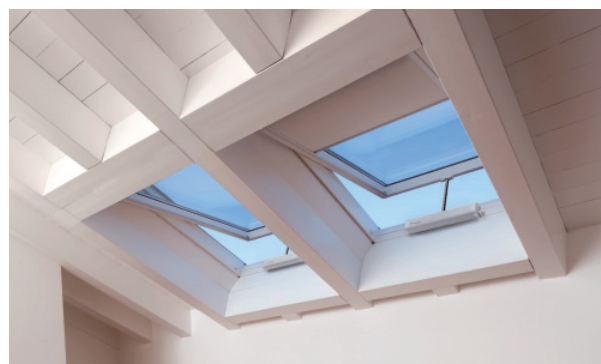
- Black RAL 9005
- Grey RAL 7035
- White RAL 9010
- Ivory RAL 1013

Openings



Description for bill of materials

Comunello electric actuator model Liwin with articulated link chain contained in the box. Operation at 230V 50Hz, or 24VDC. Electronic stop for opening, current limitation stop for closing. Up to 9 different adjustable strokes, also when motor is powered off. Can be connected in parallel. Conforming to Directives 2006/95/EC and 2004/108/EC (version at 24 VDC conforming to Directive 2004/108/EC).



W-NET is an innovative data transmission system for the coordination of several actuators (2 to 4) on one window, without an external control unit (Liwin L35).



Built-in radio receiver. Remote control transmitter available with 1 or 6 channels, 6 different colours.



Remote control option for the versions with W-BUS technology.

Technical characteristics

| ARTICLE | L25 230V basic | L35 230V basic | L35 24V basic | L35 230V R |
|-----------------------------|-------------------|---------------------------------------|---------------------------------------|---------------------------------------|
| Voltage | 230 V | 230 V | 24 V | - |
| Power consumption | 22W | 28W | 28W | 28W |
| Max. absorption. | 0.14 A | 0,19 A | 1 A | - |
| Max. thrust | 250 N | 350 N | 350 N | 350 N |
| Operation | S2 - 4 min | S2 - 4 min | S2 - 4 min | S2 - 4 min |
| Protection degree (IP) | IP44 | IP44 | IP44 | IP44 |
| Working temperature | -5°C / +50°C | -5°C / +50°C | -5°C / +50°C | -5°C / +50°C |
| Can be operated in parallel | Max. 30 actuators | Max. 30 actuators | Max. 30 actuators | Max. 30 actuators |
| W-NET versions | - | 2W-NET, 3W-NET, 4W-NET | 2W-NET, 3W-NET, 4W-NET | 2W-NET, 3W-NET, 4W-NET |
| Radio | - | - | - | Yes |
| Stroke | 200-250-380 mm | 50-100-150-200-250-300-350-400-420 mm | 50-100-150-200-250-300-350-400-420 mm | 50-100-150-200-250-300-350-400-420 mm |
| Speed | 18 mm/sec | 18 mm/sec | 18 mm/sec | 18 mm/sec |
| Weight | 1,22 Kg | 1,23 Kg | 1,22 Kg | 1,23 Kg |

SIMPLE



Quick-fastening system for installation without the use of screws

STRONG



Robust double link chain for more thrust and traction force

RELIABLE



The actuator oscillates on support brackets and accompanies the movement of the window

ADJUSTABLE



Easily adjustable stroke via dip-switch (up to 9 positions available), also when motor is powered off

SAFE



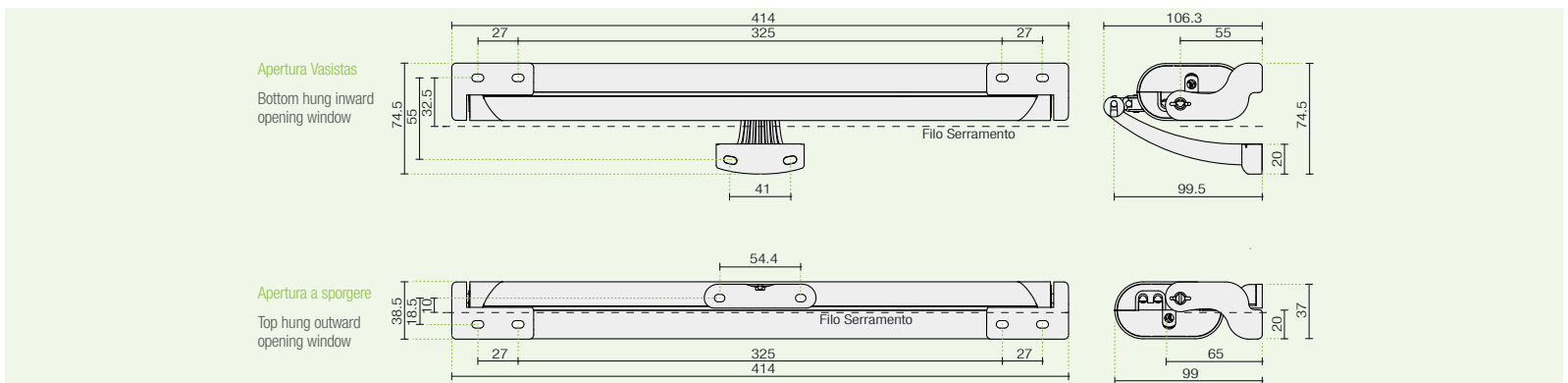
Obstacle detection and soft start and stop system for greater safety and precision.

LIMIT STOPS



Limit switch with current limitation function: guarantee of safe and perfect closing over time

Sizes



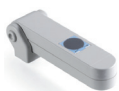
The box contains an actuator with 1.5 m power cord, a template, brackets for outward and inward windows and multi-language instructions.

Main accessories

FIXING BRACKETS FOR OUTWARD WINDOWS



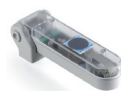
RAIN SENSOR



FIXING BRACKETS FOR INWARD WINDOWS



RAIN/SUN SENSOR



SUPPORT BRACKETS



WIND SENSOR



SUPPORT BRACKETS FOR DORMER WINDOWS



WIND/SUN SENSOR



UPPER SUPPORT BRACKETS



CONTROL UNIT - 1 MOTOR OUTPUT WITH OR WITHOUT BUILT-IN RECEIVER



LOWER SUPPORT BRACKETS



R-CONTROL Remote control with 1 (R1) or 6 channels (R6)



Available in 6 colours